

GRAIN

The harvest workhorse, from the field to the yard



All of our trailers are shotblasted prior to painting, followed by 2 pack Epoxy primer & 2 pack Polyurethane top coat.

STANDARD SPEC

- Sprung compensating axles
- Hydraulic brakes
- Grain hatch
- Inner & outer access steps
- Wheel nut indicators
- One piece floor sheet
- Side reflectors
- L.E.D lights
- Heavy duty 50B weld on eyes
- Hand brake
- Hydraulic pipe work stowing bracket
- Super single wheels 385/65R 22.5
- Chassis shock absorption pads
- Body prop

OPTIONAL EXTRAS

- High speed axles for HM1415 - 1011 - £695.00
- Air/ oil twin line braking - £1235.00
- ABS with air brakes - £2540.00
- Hydraulic load sensing valve - £685.00
- Mudguards & mud flaps - £465.00
- Flashing beacon - £145.00
- Adjustable sprung drawbar - £1440.00
- Silage sides - £2495.00
- Grain sock - £195.00
- Perspex window - £195.00
- Roll over sheet - £1600.00
- Thicker floor or side sheet - £POA
- Hardox - £POA
- Alterations to std. body sizes - £POA
- Side marker lights - £275.00
- Hydraulic tailgate - £1820.00
- Rear drawbar & services - £745.00
- 20T suspension for HM1415 - 1213 - £300.00
- Rope hooks for trailer tilts - £130.00
- Custom colour - £650.00
- Passive steering rear axle - £2320.00
- Forced steering rear axle - £3980.00
- Tapered body - FOC
- Long chassis - £395.00
- Front platform - £575.00
- Central tyre inflation system - pg 35
- Full selection of wheels & tyres - pg 34

DIMENSIONS

	HM 2020	HM 1820	HM 1517	HM 1415	HM 1213	HM 1011
Capacity	25.2 cubic m	23.3 cubic m	20.2 cubic m	18 cubic m	15 cubic m	12.5 cubic m
Body Length	6710mm (22ft)	6210mm (20ft 4in)	6210mm (20ft 4in)	6000mm (19ft 8in)	5000mm (16ft 4in)	4200mm (13ft 9in)
Width	2550mm (8ft 4in)	2550mm (8ft 4in)	2550mm (8ft 4in)	2550mm (8ft 4in)	2550mm (8ft 4in)	2550mm (8ft 4in)
Body Depth	1660mm (5ft 5in)	1660mm (5ft 5in)	1440mm (4ft 8in)	1330mm (4ft 4in)	1330mm (4ft 4in)	1330mm (4ft 4in)
Platform Height	1300mm (4ft 3in)	1300mm (4ft 3in)	1300mm (4ft 3in)	1100mm (3ft 7in)	1100mm (3ft 7in)	1100mm (3ft 7in)
Silage Capacity	39 cubic m	36 cubic m	32 cubic m	30 cubic m	25 cubic m	21 cubic m
Silage Sides Height	920mm (3ft)	920mm (3ft)	920mm (3ft)	920mm (3ft)	920mm (3ft)	920mm (3ft)
Min. Tip Height 23°	5176mm (16ft 11in)	4900mm (16ft)	4675mm (15ft 4in)	4373mm (14ft 4in)	4065mm (13ft 4in)	3855mm (12ft 7in)
Tipped Body Height	7080mm (23ft 2in)	6200mm (20ft 4in)	6045mm (19ft 9in)	5770mm (18ft 11in)	5200mm (17ft)	4630mm (15ft 2in)
Axle Size	2 x 127mm round	2 x 127mm round	2 x 127mm round	2 x 90mm square	2 x 90mm square	2 x 80mm square
Axle Type (std. fit)	420 x 180 high sp	420 x 180 high sp	420 x 180 high sp	400 x 80 ag sp	400 x 80 ag sp	400 x 80 ag sp
Side/Floor thickness	3 / 4mm	3 / 4mm	3 / 4mm	3 / 4mm	3 / 4mm	3 / 4mm
Chassis Size	250 x 150 box	250 x 150 box	250 x 150 box	250 x 150 box	250 x 150 box	250 x 150 box
Overall Length	8220mm (26ft 11in)	7720mm (25ft 3in)	7720mm (25ft 3in)	7510mm (24ft 7in)	6510mm (21ft 4in)	5710mm (18ft 8in)

COST

£22,091.22 £20,865.00 £19,581.00 £17,013.00 £15,922.00 £14,843.00



KEY DETAILS

Short, wide chassis for stability & low tipping

Fully welded sides and one piece floor, fully supported underbody

Raised lights to keep them protected

No ledges on chassis for build up

Folded side panels for strength

Rubber pads used between chassis and body

Tailgate hooks and slotted pivot for tight seal

Long bodied HM 1820 sharing the same height as HM 1517 also available



01277 899 604 info@hmtrailers.co.uk

TRI-AXLE GRAIN

The harvest workhorse, from the field to the yard



All of our trailers are shotblasted prior to painting, followed by 2 pack epoxy primer & 2 pack polyurethane top coat.

STANDARD SPEC

- Sprung compensating axles
- Hydraulic brakes
- Grain hatch
- Inner & outer access steps
- Wheel nut indicators

- One piece floor sheet
- Side reflectors
- L.E.D lights
- Heavy duty 50B weld on eyes
- Hand brake

- Hydraulic pipe work stowing bracket
- Super single wheels 385/65R 22.5
- Chassis shock absorption pads
- Body prop

OPTIONAL EXTRAS

- Air/ oil twin line braking - £1235.00
- ABS with air brakes - £2540.00
- Hydraulic load sensing valve - £685.00
- Mudguards & mud flaps - £465.00
- Flashing beacon - £145.00
- Adjustable sprung drawbar - £1440.00
- Silage sides - £2495.00
- Grain sock - £195.00
- Perspex window - £195.00

- Roll over sheet - £1600.00
- Thicker floor or side sheet - £POA
- Hardox - £POA
- Alterations to std. body sizes - £POA
- Side marker lights - £275.00
- Hydraulic tailgate - £1820.00
- Rear drawbar & services - £745.00
- Rope hooks for trailer tilts - £130.00
- Custom colour - £650.00

- Passive steering rear axle - £2320.00
- Forced steering rear axle - £3980.00
- Tapered body - FOC
- Long chassis - £395.00
- Front platform - £575.00
- Central tyre inflation system - pg 35
- Full selection of wheels & tyres - pg 34

DIMENSIONS

	HM 2224	HM 2022
Capacity	28.1 cubic m	25.7 cubic m
Body Length	7610mm (25ft)	6910mm (22ft 8in)
Width	2550mm (8ft 4in)	2550mm (8ft 4in)
Body Depth	1660mm (5ft 5in)	1660mm (5ft 5in)
Platform Height	1300mm (4ft 3in)	1300mm (4ft 3in)
Silage Capacity	44 cubic m	40 cubic m
Silage Sides Height	920mm (3ft)	920mm (3ft)
Min. Tip Height 23°	5530mm (18ft 1in)	5240mm (17ft 2in)
Tipped Body Height	7320mm (24ft)	6830mm (22ft 4in)
Axle Size	3 x 127mm round	3 x 127mm round
Axle Type (std. fit)	420 x 180 high sp	420 x 180 high sp
Side/Floor thickness	3/4mm	3 / 4mm
Chassis Size	250 x 150 box	250 x 150 box
Overall Length	9120mm (29ft 11in)	8420mm (25ft 7in)

COST

£25,808.00 £24,396.00



KEY DETAILS

Short, wide chassis for stability & low tipping

Fully welded sides and one piece floor, fully supported underbody

Raised lights to keep them protected

No ledges on chassis for build up

Folded side panels for strength

Rubber pads used between chassis and body

Tailgate hooks and slotted pivot for tight seal



SWAP BODY

One rolling chassis for seasonal body choices



All of our trailers are shotblasted prior to painting, followed by 2 pack epoxy primer & 2 pack polyurethane top coat.

STANDARD SPEC

- Outer access steps
- One piece floor sheet
- Side reflectors

- L.E.D lights
- Body prop
- Hydraulic tailgate

- Adjustable jack legs
- Quick release hydraulic couplers

OPTIONAL EXTRAS

- Mudguards & mud flaps - £465.00
- Flashing beacons - £145.00
- Perspex window - £195.00
- Thicker floor or side sheet - EPOA

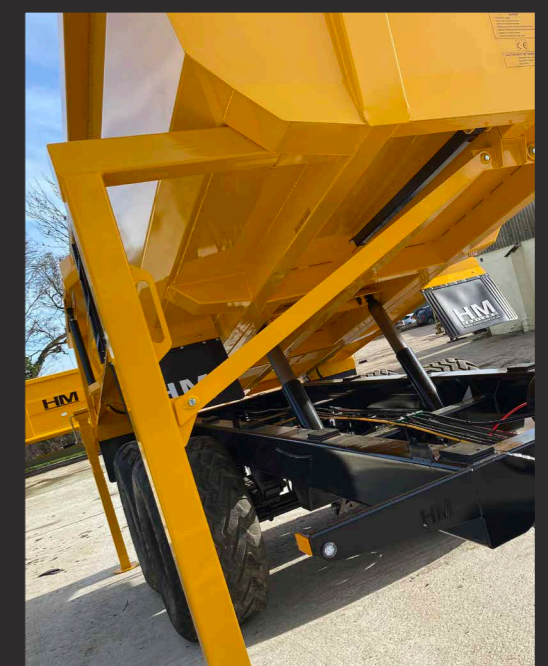
- Hardox - EPOA
- Alterations to std. body sizes - EPOA
- Side marker lights - £275.00
- Rear drawbar & services - £745.00

- Rope hooks for trailer tilts - £130.00
- Custom colour - £650.00
- Rear barn doors - FOC
- Grain hatch - £128.00

DIMENSIONS

HM SB - BODY ONLY

Capacity	14 cubic m
Body Length	6175mm (20ft 3in)
Width	2550mm (8ft 4in)
Body Depth	995mm (3ft 3in)
Platform Height	1300mm (4ft 3in)
Min. Tip Height 23°	4795mm (15ft 8in)
Tipped Body Height	6375mm (20ft 10in)
Side/Floor thickness	5/5mm
Chassis Size	250 x 150 box
Overall Length	7485mm (24ft 6in)



KEY DETAILS

Designed to fit upon HM 1820 & HM 1517 chassis

Lighter alternative to a hooklift designed for seasonal body choices

Overall lower platform height than a hooklift.

Includes two pairs of adjustable jack legs for both original grain top body & rock top body.

Fully welded sides and one piece floor, fully supported underbody

Tailgate hooks and slotted pivot for tight seal



COST

£8,911.00

01277 899 604 info@hmtrailers.co.uk