

HOOKLIFT

Unbeatable versatility from a trailer



STANDARD SPEC

All of our trailers are shotblasted prior to painting, followed by 2 pack epoxy primer & 2 pack polyurethane top coat.

Sprung compensating axles

Hydraulic brakes

L.E.D lights

Side reflectors

Heavy duty 50B weld on eye

Wheel nut indicators

Hand brake

Assist ram standard for HL16

Anti jack rams for HL16

Super single wheels 385/65R 22.5

OPTIONAL EXTRAS

Air/oil twin line braking - £1235.00
 ABS with air brakes - £2540.00
 Hydraulic load sensing valve - £685.00
 Mudguards and mud flaps - £610.00
 Flashing beacon - £145.00
 Twin flashing beacons - £290.00
 Adjustable sprung drawbar - £1440.00
 Side marker lights - £275.00
 Anti jack rams - £665.00

1m long lockable tool boxes (plastic) - £295.00 each
 Reversing lights - £220.00
 Rear switch over spool with quick release couplings - £390.00
 Underrun side guards - £251
 Weigh cells - £6550.00
 Tri axle - EPOA
 Air suspension - EPOA

Axle lift - EPOA
 Heavy duty steering - EPOA
 Custom colour - £650.00
 Passive steering axle - £3079.00
 Forced steering axle - £3980.00
 New lifting gear - £19,035.00
 Central tyre inflation system - pg 35
 Full selection of wheels & tyres - pg 34

DIMENSIONS

HL 16

HL 14

Gross Capacity (payload)	16 T	14 T
Width	2550mm (8ft 4in)	2550mm (8ft 4in)
Body Depth	To suit	To suit
Main Platform Height	1200mm (3ft 11in)	1200mm (3ft 11in)
Unladen weight	5400kg	5350kg
Axle size	2 x 127mm round	2 x 127mm round
Axle type (standard fit)	420 x 180 high sp	420 x 180 high sp
Chassis size	250 x 150 box	250 x 150 box
Wheels and tyres	385 / 65 R 22.5	385 / 65 R 22.5
Lifting Gear	Refurb/ used	Refurb/ used



KEY DETAILS

All new running gear

Cost effective using refurbished hook gear

Option to include new hook gear

Strong chassis built from steel rectangular section

Anti jack rams fitted to rear axle to stop the drawbar lifting (some models)

Stiff suspension to form stable platform

Versatility unbeaten elsewhere



COST

£19,530.00

£17,835.00

01277 899 604 info@hmtrailers.co.uk

All prices are current and are ex VAT. Quoted measurements may change without notification

TRI-AXLE HOOKLIFT

Unbeatable versatility from a trailer



All of our trailers are shotblasted prior to painting, followed by 2 pack epoxy primer & 2 pack polyurethane top coat.

STANDARD SPEC

- Air suspension
- Hydraulic brakes
- L.E.D lights
- Side reflectors

- Heavy duty 50B weld on eye
- Wheel nut indicators
- Hand brake
- Assist ram standard for HL20

- Air dump standard for HL20
- Wheel chocks
- Super single wheels 385/65R 22.5

OPTIONAL EXTRAS

- Air/oil twin line braking - £1235.00
- ABS with air brakes - £2540.00
- Hydraulic load sensing valve - £685.00
- Mudguards and mud flaps - £610.00
- Flashing beacon - £145.00
- Twin flashing beacons - £290.00
- Adjustable sprung drawbar - £1440.00
- Side marker lights - £275.00

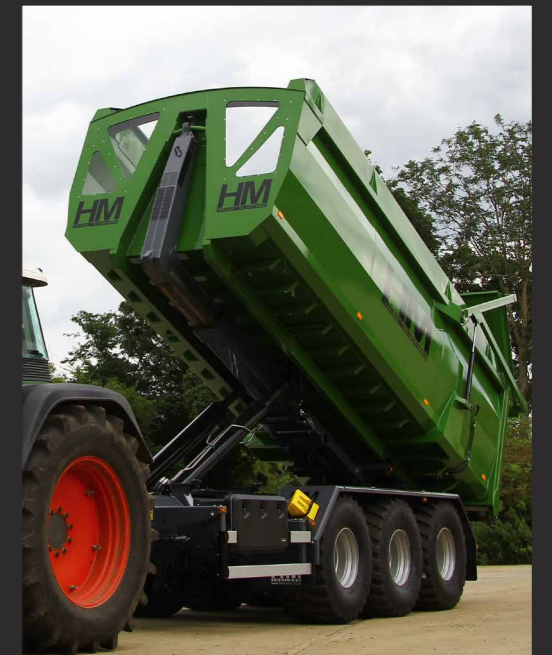
- 1m long lockable tool boxes (plastic) - £295.00 each
- Reversing lights - £220.00
- Rear switch over spool with quick release couplings - £390.00
- Underrun side guards - £251.00
- Weigh cells - £6550.00
- Front axle lift - £900.00

- Rear axle lift - £900.00
- Heavy duty steering - EPOA
- Custom colour - £650.00
- Passive steering axle - £3079.00
- Forced steering axle - £3980.00
- New lifting gear - POA
- Central tyre inflation system - pg 35
- Full selection of wheels & tyres - pg 34

DIMENSIONS

HL 20

Gross Capacity (payload)	20 T
Width	2550mm (8ft 4in)
Body Depth	To suit
Main Platform Height	1200mm (3ft 11in)
Unladen weight	5400kg
Axle size	3 x 127mm round
Axle type (standard fit)	420 x 180 high sp
Chassis size	250 x 150 box
Wheels and tyres	385 / 65 R 22.5
Lifting Gear	Refurb/ used



KEY DETAILS

- All new running gear
- Cost effective using refurbished hook gear
- Option to include new hook gear
- Strong chassis built from steel rectangular section
- Air suspension as standard
- Versatility unbeaten elsewhere



COST

£25,499.00

01277 899 604 info@hmtrailers.co.uk

All prices are current and are ex VAT. Quoted measurements may change without notification