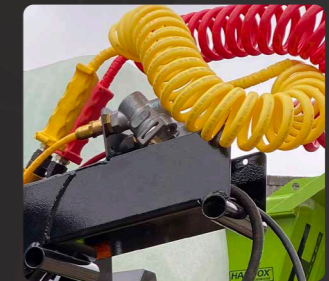
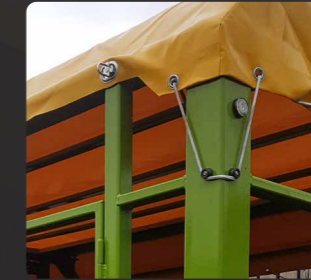




NEW BUILDS
REFURBISHMENT
RE-SALE
RENTALS
BESPOKE BUILDS



01277 899 604



info@hmtrailers.co.uk

www.hmtrailers.co.uk

@hm_trailers



@Trailersshm

@TrailersHM



Herons Farm, Herons Ln,
 Fyfield, Essex, CM5 0RQ

HM
TRAILERS

www.hmtrailers.co.uk

AGRICULTURAL
 TRAILERS & MACHINERY

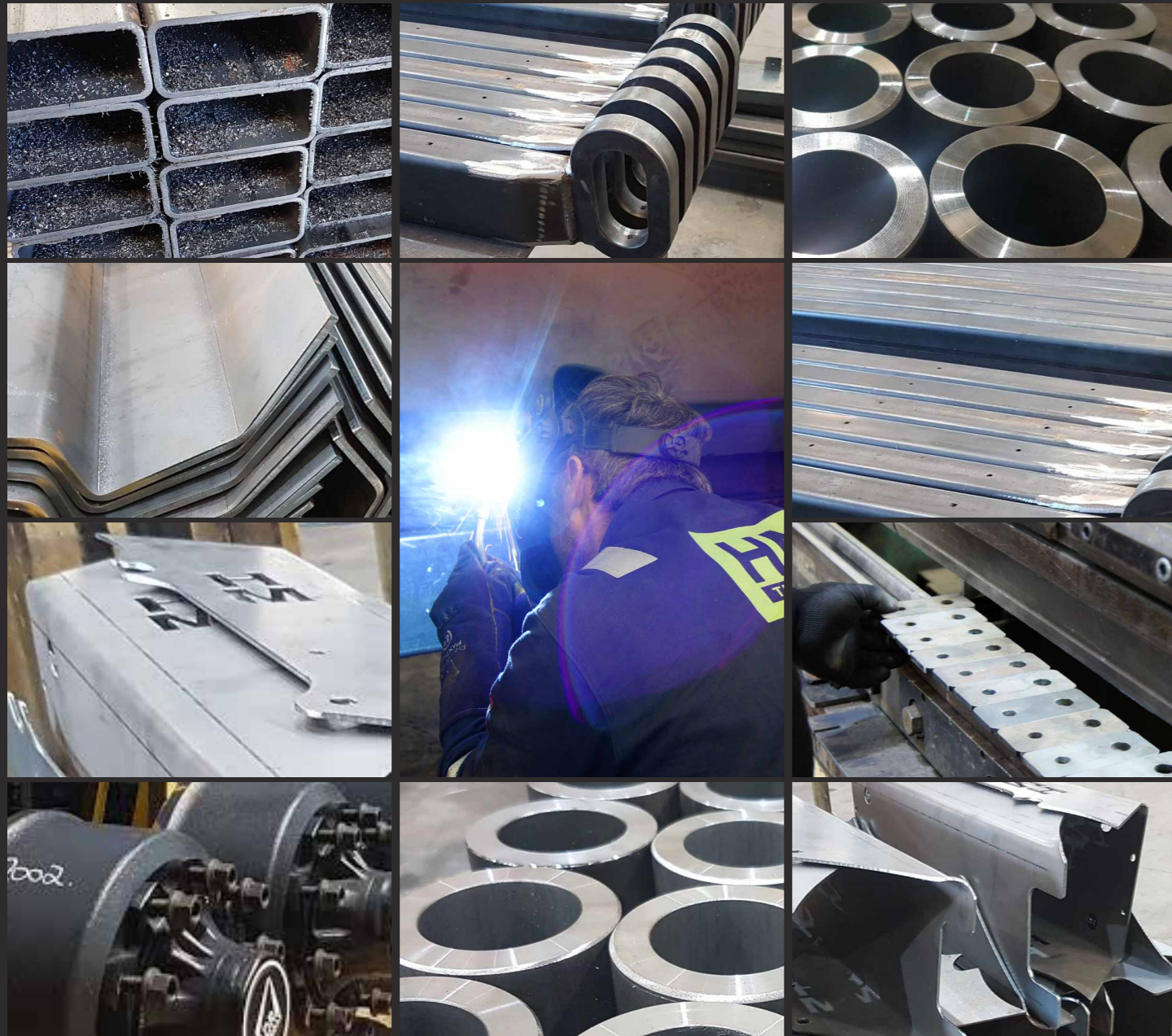
2023

INTRODUCTION

Always Innovating

BUILT BY FARMERS FOR FARMERS

In 2000 we began to develop our own range of grain trailers to address frustrations we encountered with trailers that could not keep up with modern combine capacities and that could not tip up in low barns back at the yard. Since then we have kept innovating and extending our offer to meet the needs of farmers everywhere.



MADE IN ENGLAND

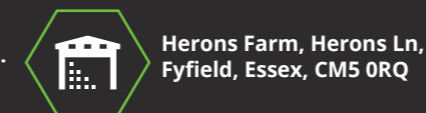
We make all our trailers in our Essex factory. We sell direct and through a network of dealerships within the UK. We love a challenge so if you have a special requirement, just ask and we'll design something fit for purpose.

CONTENTS

02	Grain Trailers	26	Agri Dump Trailers
04	Tri-axle Grain Trailers	28	Commercial Dump Trailers
06	Swap Body Trailers	30	Hooklift Trailers
08	Utility Trailers	32	Tri-axle Hooklift Trailers
10	Root Crop Trailers	34	Hooklift Bins
12	Horse Muck Trailers	36	Dolly Trailers
14	Cattle Trailers	38	Bowser Trailers
16	Tilt Trailers	40	Chaser Bowser Trailers
18	Low Loader Trailers	41	Bespoke Builds
20	Hydraulic Beavertail Trailers	42	Wheel, Tyre & Axle Options
22	Bale & Pallet Trailers	43	Central Tyre Inflation System
24	Implement Trailers	44	Trailer Hire



01277 899 604



Herons Farm, Herons Ln,
Fyfield, Essex, CM5 0RQ

GRAIN

The harvest workhorse, from the field to the yard



All of our trailers are shotblasted prior to painting, followed by 2 pack Epoxy primer & 2 pack Polyurethane top coat.

STANDARD SPEC

- Sprung compensating axles
- Hydraulic brakes
- Grain hatch
- Inner & outer access steps
- Wheel nut indicators
- One piece floor sheet
- Side reflectors
- L.E.D lights
- Heavy duty 50B weld on eyes
- Hand brake
- Hydraulic pipe work stowing bracket
- Super single wheels 385/65R 22.5
- Chassis shock absorption pads
- Body prop

OPTIONAL EXTRAS

- High speed axles for HM1415 - 1011 - £695.00
- Air/ oil twin line braking - £1235.00
- ABS with air brakes - £2540.00
- Hydraulic load sensing valve - £685.00
- Mudguards & mud flaps - £465.00
- Flashing beacon - £145.00
- Adjustable sprung drawbar - £1440.00
- Silage sides - £2495.00
- Grain sock - £195.00
- Perspex window - £195.00
- Roll over sheet - £1600.00
- Thicker floor or side sheet - £POA
- Hardox - £POA
- Alterations to std. body sizes - £POA
- Side marker lights - £275.00
- Hydraulic tailgate - £1820.00
- Rear drawbar & services - £745.00
- 20T suspension for HM1415 - 1213 - £300.00
- Rope hooks for trailer tilts - £130.00
- Custom colour - £650.00
- Passive steering rear axle - £2320.00
- Forced steering rear axle - £3980.00
- Tapered body - FOC
- Long chassis - £395.00
- Front platform - £575.00
- Central tyre inflation system - pg 35
- Full selection of wheels & tyres - pg 34

DIMENSIONS

	HM 2020	HM 1820	HM 1517	HM 1415	HM 1213	HM 1011
Capacity	25.2 cubic m	23.3 cubic m	20.2 cubic m	18 cubic m	15 cubic m	12.5 cubic m
Body Length	6710mm (22ft)	6210mm (20ft 4in)	6210mm (20ft 4in)	6000mm (19ft 8in)	5000mm (16ft 4in)	4200mm (13ft 9in)
Width	2550mm (8ft 4in)	2550mm (8ft 4in)	2550mm (8ft 4in)	2550mm (8ft 4in)	2550mm (8ft 4in)	2550mm (8ft 4in)
Body Depth	1660mm (5ft 5in)	1660mm (5ft 5in)	1440mm (4ft 8in)	1330mm (4ft 4in)	1330mm (4ft 4in)	1330mm (4ft 4in)
Platform Height	1300mm (4ft 3in)	1300mm (4ft 3in)	1300mm (4ft 3in)	1100mm (3ft 7in)	1100mm (3ft 7in)	1100mm (3ft 7in)
Silage Capacity	39 cubic m	36 cubic m	32 cubic m	30 cubic m	25 cubic m	21 cubic m
Silage Sides Height	920mm (3ft)	920mm (3ft)	920mm (3ft)	920mm (3ft)	920mm (3ft)	920mm (3ft)
Min. Tip Height 23°	5176mm (16ft 11in)	4900mm (16ft)	4675mm (15ft 4in)	4373mm (14ft 4in)	4065mm (13ft 4in)	3855mm (12ft 7in)
Tipped Body Height	7080mm (23ft 2in)	6200mm (20ft 4in)	6045mm (19ft 9in)	5770mm (18ft 11in)	5200mm (17ft)	4630mm (15ft 2in)
Axle Size	2 x 127mm round	2 x 127mm round	2 x 127mm round	2 x 90mm square	2 x 90mm square	2 x 80mm square
Axle Type (std. fit)	420 x 180 high sp	420 x 180 high sp	420 x 180 high sp	400 x 80 ag sp	400 x 80 ag sp	400 x 80 ag sp
Side/Floor thickness	3 / 4mm	3 / 4mm	3 / 4mm	3 / 4mm	3 / 4mm	3 / 4mm
Chassis Size	250 x 150 box	250 x 150 box	250 x 150 box	250 x 150 box	250 x 150 box	250 x 150 box
Overall Length	8220mm (26ft 11in)	7720mm (25ft 3in)	7720mm (25ft 3in)	7510mm (24ft 7in)	6510mm (21ft 4in)	5710mm (18ft 8in)

COST

£22,091.22 £20,865.00 £19,581.00 £17,013.00 £15,922.00 £14,843.00



KEY DETAILS

Short, wide chassis for stability & low tipping

Fully welded sides and one piece floor, fully supported underbody

Raised lights to keep them protected

No ledges on chassis for build up

Folded side panels for strength

Rubber pads used between chassis and body

Tailgate hooks and slotted pivot for tight seal

Long bodied HM 1820 sharing the same height as HM 1517 also available



01277 899 604 info@hmtrailers.co.uk

TRI-AXLE GRAIN

The harvest workhorse, from the field to the yard



All of our trailers are shotblasted prior to painting, followed by 2 pack epoxy primer & 2 pack polyurethane top coat.

STANDARD SPEC

- Sprung compensating axles
- Hydraulic brakes
- Grain hatch
- Inner & outer access steps
- Wheel nut indicators

- One piece floor sheet
- Side reflectors
- L.E.D lights
- Heavy duty 50B weld on eyes
- Hand brake

- Hydraulic pipe work stowing bracket
- Super single wheels 385/65R 22.5
- Chassis shock absorption pads
- Body prop

OPTIONAL EXTRAS

- Air/ oil twin line braking - £1235.00
- ABS with air brakes - £2540.00
- Hydraulic load sensing valve - £685.00
- Mudguards & mud flaps - £465.00
- Flashing beacon - £145.00
- Adjustable sprung drawbar - £1440.00
- Silage sides - £2495.00
- Grain sock - £195.00
- Perspex window - £195.00

- Roll over sheet - £1600.00
- Thicker floor or side sheet - £POA
- Hardox - £POA
- Alterations to std. body sizes - £POA
- Side marker lights - £275.00
- Hydraulic tailgate - £1820.00
- Rear drawbar & services - £745.00
- Rope hooks for trailer tilts - £130.00
- Custom colour - £650.00

- Passive steering rear axle - £2320.00
- Forced steering rear axle - £3980.00
- Tapered body - FOC
- Long chassis - £395.00
- Front platform - £575.00
- Central tyre inflation system - pg 35
- Full selection of wheels & tyres - pg 34

DIMENSIONS

	HM 2224	HM 2022
Capacity	28.1 cubic m	25.7 cubic m
Body Length	7610mm (25ft)	6910mm (22ft 8in)
Width	2550mm (8ft 4in)	2550mm (8ft 4in)
Body Depth	1660mm (5ft 5in)	1660mm (5ft 5in)
Platform Height	1300mm (4ft 3in)	1300mm (4ft 3in)
Silage Capacity	44 cubic m	40 cubic m
Silage Sides Height	920mm (3ft)	920mm (3ft)
Min. Tip Height 23°	5530mm (18ft 1in)	5240mm (17ft 2in)
Tipped Body Height	7320mm (24ft)	6830mm (22ft 4in)
Axle Size	3 x 127mm round	3 x 127mm round
Axle Type (std. fit)	420 x 180 high sp	420 x 180 high sp
Side/Floor thickness	3/4mm	3 / 4mm
Chassis Size	250 x 150 box	250 x 150 box
Overall Length	9120mm (29ft 11in)	8420mm (25ft 7in)

COST

£25,808.00 £24,396.00



KEY DETAILS

Short, wide chassis for stability & low tipping

Fully welded sides and one piece floor, fully supported underbody

Raised lights to keep them protected

No ledges on chassis for build up

Folded side panels for strength

Rubber pads used between chassis and body

Tailgate hooks and slotted pivot for tight seal



SWAP BODY

One rolling chassis for seasonal body choices



STANDARD SPEC

Outer access steps

One piece floor sheet

Side reflectors

L.E.D lights

Body prop

Hydraulic tailgate

Adjustable jack legs

Quick release hydraulic couplers

All of our trailers are shotblasted prior to painting, followed by 2 pack epoxy primer & 2 pack polyurethane top coat.

OPTIONAL EXTRAS

Mudguards & mud flaps - £465.00
 Flashing beacons - £145.00
 Perspex window - £195.00
 Thicker floor or side sheet - EPOA

Hardox - EPOA
 Alterations to std. body sizes - EPOA
 Side marker lights - £275.00
 Rear drawbar & services - £745.00

Rope hooks for trailer tilts - £130.00
 Custom colour - £650.00
 Rear barn doors - FOC
 Grain hatch - £128.00

DIMENSIONS

HM SB - BODY ONLY

Capacity	14 cubic m
Body Length	6175mm (20ft 3in)
Width	2550mm (8ft 4in)
Body Depth	995mm (3ft 3in)
Platform Height	1300mm (4ft 3in)
Min. Tip Height 23°	4795mm (15ft 8in)
Tipped Body Height	6375mm (20ft 10in)
Side/Floor thickness	5/5mm
Chassis Size	250 x 150 box
Overall Length	7485mm (24ft 6in)



KEY DETAILS

Designed to fit upon HM 1820 & HM 1517 chassis

Lighter alternative to a hooklift designed for seasonal body choices

Overall lower platform height than a hooklift.

Includes two pairs of adjustable jack legs for both original grain top body & rock top body.

Fully welded sides and one piece floor, fully supported underbody

Tailgate hooks and slotted pivot for tight seal



COST

£8,911.00

01277 899 604 info@hmtrailers.co.uk

UTILITY

Everyday, versatile, universal trailer



STANDARD SPEC

All of our trailers are shotblasted prior to painting, followed by 2 pack epoxy primer & 2 pack polyurethane top coat.

Hydraulic brakes

Body prop

L.E.D lights

One piece floor sheet

Hydraulic pipe work stowing bracket

Chassis shock absorption pads

Wheel nut indicators

Hand brake

OPTIONAL EXTRAS

High speed axles (per axle) - **£350.00**
 Air/oil twin line braking - **£1100.00**
 Mud flaps - **£425.00**
 Flashing beacon - **£145.00**
 Bale extension for (DS) 610mm (2ft) - **£410.00**

Rave rear - **£290.00**
 Rave front - **£290.00**
 Plastic toolbox - **£155.00**
 Drop sides - **£565.00**
 Sides higher by 170mm (7in) - **£305.00**

Custom colour - **£650.00**
 Side marker lights - **£275.00**
 Full selection of wheels & tyres - **pg 34**

DIMENSIONS



KEY DETAILS

Stable chassis built from steel rectangular section

One piece floor fully supported

Folded side panels for strength

Rubber pads used between chassis and body

Drop sides allow the trailer to be left as a flat trailer



HU 10/10DS HU 8/8DS HU 6/6DS HU 5/5DS HU 4

	HU 10/10DS	HU 8/8DS	HU 6/6DS	HU 5/5DS	HU 4
Capacity	10 T	8 T	6 T	5 T	4 T
Body Length	4600mm (15ft 1in)	4000mm (13ft 1in)	3500mm (11ft 5in)	3000mm (9ft 10in)	2500mm (8ft 2in)
Width	2000mm (6ft 6in)	1830mm (6ft)	1830mm (6ft)	1830mm (6ft)	1830mm (6ft)
Body Depth	510mm (1ft 8in)	510mm (1ft 8in)	435mm (1ft 5in)	435mm (1ft 5in)	435mm (1ft 5in)
Platform Height	1100mm (3ft 7in)	1100mm (3ft 7in)	950mm (3ft 1in)	900mm (2ft 11in)	900mm (2ft 11in)
Tipped Body Height 60°	4900mm (16ft)	4400mm (14ft 5in)	3700mm (12ft 1in)	3300mm (10ft 9in)	3000mm (9ft 10in)
Axle Size	2 x 80mm square	2 x 70mm square	1 x 70 mm square	1 x 70mm square	1 x 70mm square
Side/Floor thickness	3 / 4mm	3 / 4mm	3 / 4mm	3 / 4mm	3 / 4mm
Chassis Size	200 x 100 box	200 x 100 box	150 x 100 box	150 x 100 box	150 x 100 box
Overall Length	6100mm (20ft)	5500mm (18ft)	5000mm (16ft 4in)	4500mm (14ft 9in)	4000mm (13ft 1in)
Tyres	385 / 65 R22.5	385 / 65 R22.5	12.5 / 80 R15.3	10.5 / 80 R15.3	10.5 / 80 R15.3

COST

£11,171.00 **£9,817.00** **£7,110.00** £6,548.00 £6,099.00

01277 899 604 info@hmtrailers.co.uk

All prices are current and are ex VAT. Quoted measurements may change without notification

ROOT CROP

Protecting your harvested crops



STANDARD SPEC

All of our trailers are shotblasted prior to painting, followed by 2 pack epoxy primer & 2 pack polyurethane top coat.

Sprung compensating axles

Hydraulic brakes

Grain hatch

Inner & outer access steps

Wheel nut indicators

One piece floor sheet

Side reflectors

L.E.D lights

Heavy duty 50B weld on eyes

Hand brake

Hydraulic pipe work stowing bracket

Super single wheels 385/65R 22.5

Chassis shock absorption pads

Body prop

Front grill with perspex

OPTIONAL EXTRAS

High speed axles (HM 14RC & 12RC) - £695.00
 Air/oil twin line braking - £1235.00
 ABS with air brakes - £2540.00
 Hydraulic load sensing valve - £685.00
 Mudguards and mud flaps - £465.00
 Flashing beacon - £145.00
 Adjustable sprung drawbar - £1440.00
 Triaxle - £1952.00
 Silage sides - £2495.00

Grain sock - £195.00
 Fold down panel (window) - £285.00
 Roll over sheet - £1600.00
 Thicker floor or side sheets - EPOA
 Hardox - EPOA
 Alterations to std. body sizes - EPOA
 Side marker lights - £275.00
 Hydraulic tailgate - £1820.00
 Rear drawbar and services - £745.00

20T suspension for HM 14RC & 12RC - £300.00
 Rope hooks for trailer tilts - £130.00
 Custom colour - £650.00
 Passive steering axle - £2320.00
 Forced steering axle - £3980.00
 Central tyre inflation system - pg 35
 Full selection of wheels & tyres - pg 34

DIMENSIONS

	HM 18RC	HM 16RC	HM 14RC	HM 12RC
Capacity	22.5 cubic m	19.5 cubic m	17.5 cubic m	14.5 cubic m
Body Length	7600mm (24ft 11in)	7500 mm (24ft 7in)	6800mm (22ft 3in)	5600mm (18ft 4in)
Max width	2550mm (8ft4in)	2550mm (8ft4in)	2550mm (8ft4in)	2550mm (8ft4in)
Body Depth	1360mm (4ft 5in)	1180mm (3ft 10in)	1180mm (3ft 10in)	1180mm (3ft 10in)
Platform Height	1300mm (4ft 3in)	1300mm (4ft 3in)	1100mm (3ft 7in)	1100mm (3ft 7in)
Silage Capacity	37.4 cubic m	34.2 cubic m	30.8 cubic m	25.4 cubic m
Silage Sides Height	920mm (3ft)	920mm (3ft)	920mm (3ft)	920mm (3ft)
Tipped Body Height	8330mm (27ft 3in)	8245mm (27ft)	7345mm (24ft 1in)	6305mm (23ft 11in)
Axle Size	2 x 127mm round	2 x 127mm round	2 x 90mm square	2 x 90mm square
Axle Type (std. fit)	420 x 180 high sp	420 x 180 high sp	400 x 80 ag sp	400 x 80 ag sp
Side/Floor thickness	3 / 4mm	3 / 4mm	3 / 4mm	3 / 4mm
Chassis Size	250 x 150 box	250 x 150 box	250 x 150 box	250 x 150 box
Overall Length	9110mm (29ft 10in)	9010mm (29ft 6in)	8310mm (27ft 3in)	7110mm (23ft 3in)

COST

£22,213.00

£20,801.00

£18,163.00

£17,045.00



KEY DETAILS

Strong chassis built from steel rectangular section

One piece floor fully supported underbody

Flat internal sides (except HM18RC)

Tapered body to help unloading

60 degree tip angle

Fully welded floor and sides

Rubber pads used between chassis and body

Raised lights to keep protected



HORSE MUCK

Robust tipping trailer, with front access ramp



All of our trailers are shotblasted prior to painting, followed by 2 pack epoxy primer & 2 pack polyurethane top coat.

STANDARD SPEC

Front access ramp in chequerplate

L.E.D lights

Hand brake

Single piece rear door

OPTIONAL EXTRAS

High speed axles - £350.00
 Mudguards and mud flaps - £425.00
 Variation in body size - £POA
 Side marker lights - £275.00

Ropehooks - £130.00
 Clear roll over sheet - £1360.00
 Double rear door - £285.00
 Heavy duty ramp - £350.00

Custom colour - £650.00
 Full selection of wheels & tyres - pg 34

DIMENSIONS



KEY DETAILS

Strong chassis built from steel rectangular section

Folded side sheets for added strength

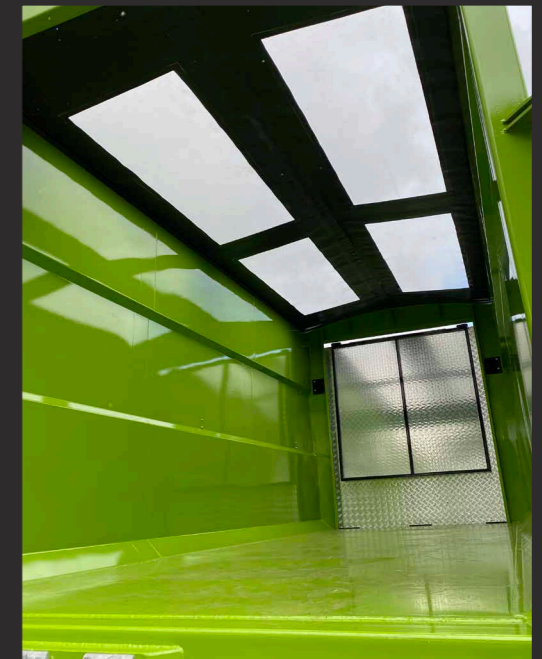
Front access ramp made with aluminium durbar for non-slip

Single or double rear door



HMU 8 HMU 6 HMU 4

	HMU 8	HMU 6	HMU 4
Capacity	8 T	6 T	4 T
Body Length	4880mm (16ft)	3600mm (11ft 10in)	2700mm (8ft 10in)
Width	2100mm (6ft 10in)	2100mm (6ft 10in)	2100mm (6ft 10in)
Body Depth	2100mm (6ft 10in)	2100mm (6ft 10in)	2100mm (6ft 10in)
Access Angle	17 degrees	17 degrees	17 degrees
Axle Size	80mm square	70mm square	70mm square
Overall Length	6300mm (20ft 8in)	5020mm (16ft 6in)	4120mm (13ft 6in)
Tyres	12.5/80 15.3	10/75 R15.3	10/75 R15.3



COST

£11,150.00 £9,790.00 £9,180.00

01277 899 604 info@hmtrailers.co.uk

All prices are current and are ex VAT. Quoted measurements may change without notification

CATTLE

Smooth, safe & reliable cattle transportation



STANDARD SPEC

All of our trailers are shotblasted prior to painting, followed by 2 pack epoxy primer & 2 pack polyurethane top coat.

High speed axles

L.E.D lights

Mudguards

Hydraulic suspension accumulators

Super single wheels 385/65R 22.5

High & low level lights

Hand brake

Hydraulic pipe work storage

Wheel nut indicators

OPTIONAL EXTRAS

Air/oil twin line braking - £1355.00
Internal partition (moveable) - £660.00
Internal partition (Fixed) - £290.00

Flashing beacon - £145.00
Cover - £1560.00
Rope Hooks - £130.00

Full selection of wheels & tyres - pg 34
Side marker lights - £270.00
Custom colour - £650.00

DIMENSIONS



KEY DETAILS

- High speed
- Axle removable and bushed
- Axle pivots greasable and servicable
- 2 inch drains at rear for effluent
- Hydraulic suspension
- Folded side panels
- Front raise axle for easy turning and better ride (2 axle models)
- Floor lowering for easier cattle loading



HCT 85

HCT 74

HCT 58

	HCT 85	HCT 74	HCT 58
Capacity	12 T	9.5 T	6 T
Body Length	8500mm (27ft 10in)	7400mm (24ft)	5800mm (19ft)
Width	2550mm (8ft 4in)	2550mm (8ft 4in)	2550mm (8ft 4in)
Body Depth	1930mm (6ft 4in)	1930mm (6ft 4in)	1930mm (6ft 4in)
Platform Height	650mm	650mm	650mm
Access Height	225mm	225mm	225mm
Axle Size	2 x 127mm round	2 x 127mm round	1 x 127mm round
Brake Size	406 x 120 scam	406 x 120 scam	406 x 120 scam
Chassis size	185 x 75 channel	185 x 75 channel	185 x 75 channel
Tyres	385/65 R22.5	385/65 R22.5	385/65 R22.5
Overall Length	10000mm (32ft 10in)	8900mm (29ft 2in)	7300mm (23ft 11in)



COST

£24,655.00

£23,300.00

£19,775.00

01277 899 604 info@hmtrailers.co.uk

All prices are current and are ex VAT. Quoted measurements may change without notification

TILT

Easy loading and sturdy construction



STANDARD SPEC

All of our trailers are shotblasted prior to painting, followed by 2 pack epoxy primer & 2 pack polyurethane top coat.

Sprung compensating axles

Hydraulic brakes

L.E.D lights

Side reflectors

Hydraulic pipe work

1ft headboard

Wheel nut indicators

Durbar floor

Super single wheels 385/65R 22.5

Rope hooks / chain points

Handbrake

OPTIONAL EXTRAS

High speed axles (per axle) - **£350.00**
 Air/oil twin line braking - **£1235.00**
 ABS with air brakes - **£2540.00**
 Hydraulic load sensing valve - **£685.00**
 Mudguards drive over - **£465.00**
 Flashing beacon - **£145.00**

Side lockable toolbox (steel) - **£295.00**
 Side lockable toolbox (plastic) - **£155.00**
 Moveable ramps - **£251.00**
 Side marker lights - **£275.00**
 Ratchet strap rail (under bed) - **£155.00**
 Heavy duty lashing points - **£250.00**

Varying floor types - **£POA**
 Alterations to std. body sizes - **£255.00 pft**
 Custom colour - **£650.00**
 Full selection of wheels & tyres - **pg 34**

DIMENSIONS



KEY DETAILS

Rectangle section cross ribs that span complete width of the trailer

Chain bars and rope hooks set into channel

Sliding rear ramps available

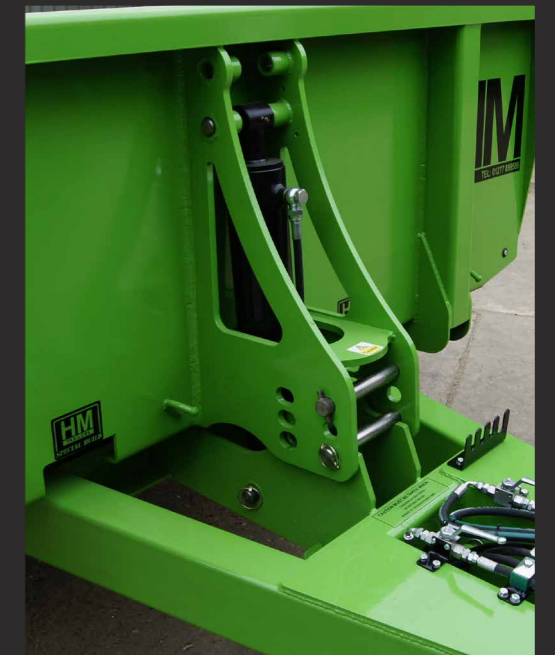
Strong chassis built from rectangular steel section



HM TB 14

HM TB 8

Bed Length	7750mm (25ft 5in)	6100mm (20ft)
Overall Length	9730mm (31ft 11in)	8100mm (26ft 7in)
Width	2550mm (8ft 2in)	2550mm (8ft 2in)
Ride Height	860mm (2ft 9in)	860mm (2ft 9in)
Carrying Capacity	14T	8T
Floor Type	Durbar	Durbar
Chassis	200 x 100 box	200 x 100 box
Side Rails	150 x 75mm	125 x 65mm
Axle Size	2 x 90mm square	2 x 80mm square
Axle Type (standard fit)	300 x 90 ag sp	350 x 60 ag sp



COST

£14,776.00

£13,360.00

01277 899 604 info@hmtrailers.co.uk

All prices are current and are ex VAT. Quoted measurements may change without notification

LOW LOADER

The all round machine mover



STANDARD SPEC

All of our trailers are shotblasted prior to painting, followed by 2 pack epoxy primer & 2 pack polyurethane top coat.

- Sprung compensating axles
- Hydraulic brakes
- L.E.D lights
- Side reflectors

- Hydraulic pipe work
- 1ft headboard
- Wheel nut indicators
- Hard wood floor

- 215/75 R 17.5 twin wheels
- Rope hooks / chain points
- Handbrake

OPTIONAL EXTRAS

- High speed axles (per axle) - £350.00
- Air/oil twin line braking - £1235.00
- ABS with air brakes - £2540.00
- Hydraulic load sensing valve - £685.00
- Mud flaps - £230.00
- Flashing beacon - £145.00
- Adjustable sprung drawbar - £1330.00
- Side lockable toolbox (steel) - £295.00
- Side lockable toolbox (plastic) - £155.00
- Hydraulic ramps - £585.00
- Hydraulic rear jack legs - £450.00
- Rear hydraulic spool block - £255.00

- Moveable ramps - £155.00
- Aluminum removable ramps - £1550.00
- Side boards (on top of the bed) - £740.00
- side rails (lower) - £255.00
- Side marker lights (compulsory for trailers over 9m in length) - £275.00
- Bale rake - £385.00
- Bale wedge (heavy duty) - £730.00
- Ratchet Strap rail (under bed) - £155.00
- Heavy duty lashing points - £250.00
- 4 retractable load locks - £510.00
- Varying floor types - EPOA

- Alterations to std. body sizes - £255.00 pft
- Manual outriggers - EPOA
- Demountable water tanks - EPOA
- Custom colour - £650.00
- Turntable (wheel dependent) - £3535.00
- Passive steering axle - £2320.00
- Forced steering rear axle incl steering control - £3980.00
- Central tyre inflation - pg 35
- Full selection of wheels & tyres - pg 34

DIMENSIONS



KEY DETAILS

Rectangle section cross ribs that span complete width of the trailer

Chain bars and rope hooks set into channel

Wide ramps to accommodate any vehicle size

Strong chassis built from rectangular steel section

Strong ramp construction



	HM 336	HM 276	HM 186	HM 183	HM 133
Bed Length	6334mm (20ft 9in)	6334mm (20ft 9in)	5725mm (18ft 9in)	4500mm (14ft 9in)	4500mm (14ft 9in)
Beaver Tail	1625mm (5ft 4in)	1625mm (5ft 4in)	1625mm (5ft 4in)	1250mm (4ft 1in)	1250mm (4ft 1in)
Overall Length	9610mm (31ft 6in)	9610mm (31ft 6in)	9000mm (29ft 6in)	7500mm (24ft 7in)	7500mm (24ft 7in)
Width	2500mm (8ft 2in)	2500mm (8ft 2in)	2500mm (8ft 2in)	2500mm (8ft 2in)	2500mm (8ft 2in)
Beaver Tail Angle	9.5deg	9.5deg	9.5deg	12.5deg	12.5deg
Ride Height	860mm (2ft 9in)	860mm (2ft 9in)	860mm (2ft 9in)	860mm (2ft 9in)	860mm (2ft 9in)
Carrying Capacity	27T	22T	15T	15T	10T
Floor Type	Keruing	Keruing	Keruing	Keruing	Keruing
Chassis	250 x 150 box	250 x 150 box	250 x 150 box	250 x 150 box	250 x 150 box
Side Rails	180 x 75mm	150 x 75mm	150 x 75mm	150 x 75mm	150 x 75mm
Axle Size	3 x 90mm square	3 x 90mm square	2 x 90mm square	2 x 90mm square	2 x 90mm square
Axle Type (standard fit)	300 x 90 ag sp	300 x 90 ag sp	300 x 90 ag sp	300 x 90 ag sp	300 x 90 ag sp

COST

01277 899 604 info@hmtrailers.co.uk

£18,039.00 £17,283.00 £14,215.00 £13,295.00 £12,123.00

All prices are current and are ex VAT. Quoted measurements may change without notification

HYDRAULIC BEAVERTAIL

Heavyweight transport trailer



All of our trailers are shotblasted prior to painting, followed by 2 pack epoxy primer & 2 pack polyurethane top coat.

STANDARD SPEC

- 8ft beavertail
- Rear spool block
- Rear beavertail ram locks
- Durbar floor

- Rope hooks/ chain points
- Hydraulic all round braking
- L.E.D lights

- Wheel nut indicators
- Hand brake
- 215/75 R 17.5 twin wheels

OPTIONAL EXTRAS

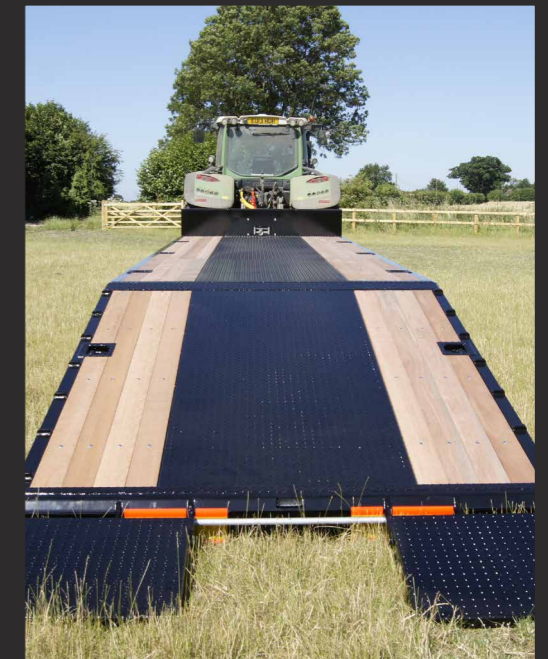
- High speed axles (per axle) - £350.00
- Air/oil, twin line braking - £1235.00
- ABS with air brakes - £2540.00
- Hydraulic load sensing valve - £685.00
- Mud flaps - £425.00
- Flashing beacon - £145.00
- Adjustable sprung drawbar - £1330.00
- Side boards (on top of the bed) - £740.00
- Side rails (lower) - £255.00
- Side lockable toolbox (steel) - £295.00

- Side lockable toolbox (plastic) - £155.00
- Alterations to std. body sizes - £255 pft
- Front/Rear rake (per unit) - £390.00
- Rear round bale rake - £390.00
- Hydraulic box compressor - £680.00
- Ratchet strap rail (under bed) - £155.00
- Heavy duty lashing points - £250.00
- Timber floor keruing - £32.00 pft
- Half timber half durbar floor - £32.00 pft
- 4 retractable load locks - £510.00

- Side marker lights (compulsory for trailers over 9m in length) - £275.00
- Demountable water tanks - EPOA
- Custom colour - £650.00
- Passive steering axle - £2320.00
- Forced steering rear axle incl steering control - £3980
- Central tyre inflation system - pg 35
- Full selection of wheels & tyres - pg 34

DIMENSIONS

	HMBV 22	HMBV 20	HMBV14
Bed Length	9760mm (32ft)	9760mm (32ft)	9150mm (30ft)
Beaver Tail	2440mm (8ft)	2440mm (8ft)	2440mm (8ft)
Overall Length	11285mm (37ft)	11285mm (37ft)	10675mm (35ft)
Width	2500mm (8ft 2in)	2500mm (8ft 2in)	2500mm (8ft 2in)
Ride Height	900mm (2ft 11in)	900mm (2ft 11in)	900mm (2ft 11in)
Carrying Capacity	22 T	20 T	14 T
Floor Type	Durbar	Durbar	Durbar
Chassis	250 x 150 box	250 x 150 box	250 x 150 box
Side Rails	150 x 75mm	150 x 75mm	150 x 75mm
Axle Size	3 x 90mm square	3 x 90mm square	2 x 90mm square
Brake Size (axle type)	400 x 80 ag sp	300 x 90 ag sp	300 x 90 ag sp



KEY DETAILS

Rectangle section cross ribs that span complete width of the trailer

Chain bars and rope hooks set into channel

Ram lockouts to allow loading of beavertail

5T tail lift enables lift of vehicle parked on beavertail

Shallow load angle

Doubles as a low loader and bale trailer

No rear overhang to get caught on



COST

£20,552.00 £19,829.00 £16,582.00

01277 899 604 info@hmtrailers.co.uk

All prices are current and are ex VAT. Quoted measurements may change without notification

BALE & PALLET

Versatile & built to last



STANDARD SPEC

All of our trailers are shotblasted prior to painting, followed by 2 pack epoxy primer & 2 pack polyurethane top coat.

Heavy duty 50B weld on eyes

Rope hooks / chain points

2ft headboard

Smooth steel flooring

Hydraulic all round braking

L.E.D lights

Wheel nut indicators

Hand brake

Super single wheels 385/65 R 22.5

OPTIONAL EXTRAS

High speed axles (per axle) - £350.00
 Air/oil, twin line braking - £1235.00
 ABS with air brakes - £2540.00
 Hydraulic load sensing valve - £685.00
 Mud flaps - £425.00
 Flashing beacon - £145.00
 Adjustable sprung drawbar - £1330.00
 Side boards (on top of the bed) - £740.00
 Side rails (lower) - £250.00
 Side lockable toolbox (steel) - £295.00
 Side lockable toolbox (plastic) - £155.00
 Alterations to std. body sizes - £255 pft

Front/Rear rake (per unit) - £385.00
 Rear round bale rake - £280.00
 Hydraulic box compressor - £680.00
 Hydraulic side walkways - £810.00
 Ratchet strap rail (under bed) - £155.00
 Heavy duty lashing points - £250.00
 Durbar floor 4.5mm - £13.00 pft
 Timber floor Keruing - £32.00 pft
 4ft rear extension (extra lights) - £975.00
 4 retractable load locks - £510.00
 Side marker lights (compulsory for trailers over 9m in length) - £275.00

Custom colour - £650.00
 Demountable water tanks - £POA
 Heavy duty construction (box over box) - £POA
 Seed Frame - £1530.00
 Bale securing system - £POA
 Passive steering axle - £2320.00
 Forced steering rear axle incl steering control - £3980.00
 Central tyre inflation - pg 35
 Full selection of wheels & tyres - pg 34

DIMENSIONS

	HBT 20T	HBT 18	HBT 16	HBT 14	HBT 12	HBT 10
Bed Length	9760mm (32ft)	8500mm (28ft)	7500mm (24ft)	7500mm (24ft)	7500mm (24ft)	7500mm (24ft)
Overall Length	11260 mm (37ft)	10000 (33ft)	9000mm (29ft 6in)	9000mm (29ft 6in)	9000mm (29ft 6in)	9000mm (29ft 6in)
Width	2500mm (8ft 2in)	2500mm (8ft 2in)	2500mm (8ft 2in)	2500mm (8ft 2in)	2500mm (8ft 2in)	2500mm (8ft 2in)
Ride Height	1250mm (4ft 1in)	1150mm (3ft 9in)	1150mm (3ft 9in)	1150mm (3ft 9in)	1150mm (3ft 9in)	1150mm (3ft 9in)
Carrying Capacity	20 T	18T	16 T	14 T	12 T	10 T
Floor Type	4mm plain steel	4mm plain steel	4mm plain steel	4mm plain steel	4mm plain steel	3mm plain steel
Chassis Beam	250 x 150mm box	250 x 150mm box	250 x 150mm box	250 x 150mm box	250 x 150mm box	250 x 150mm box
Side Rails Channel	125 x 65mm	125 x 65mm	125 x 65mm	125 x 65mm	125 x 65mm	125 x 65mm
Axle Size	3 x 90mm square	3 x 90mm square	2 x 90mm square	2 x 90mm square	2 x 80mm square	2 x 70mm square
Brake Size (axle type)	400 x 80 ag sp	400 x 80 ag sp	400 x 80 ag sp	350 x 90 ag sp	350 x 90 ag sp	350 x 60 ag sp

COST

£16,994.00 £14,720.00 £12,398.00 £11,724.00 £11,050.00 £10,231.00



KEY DETAILS

Chassis rails run the length of the trailer with 4mm folded ribs

Lightweight chassis

Headboard sockets for rakes and front extras

Rear sockets for rakes, extensions, box compressors and other extras

Chain bars and rope hooks set into channel



01277 899 604 info@hmtrailers.co.uk

All prices are current and are ex VAT. Quoted measurements may change without notification

IMPLEMENT

Stepped/ hydraulically lowered for plant transportation



STANDARD SPEC

Hydraulic brakes

Side reflectors

Heavy duty 50B weld on eye

Hydraulic pipe work

Number plate board

Smooth steel flooring

Super single wheels 385/65R 22.5

Rope hooks / chain points

Wheel nut indicators

Hand brake

All of our trailers are shotblasted prior to painting, followed by 2 pack epoxy primer & 2 pack polyurethane top coat.

OPTIONAL EXTRAS

High speed axles (per axle) - £350.00
 Air/oil, twin line braking - £1100.00
 ABS with air brakes - £2100.00
 Hydraulic load sensing valve - £685.00
 Mudguards and mud flaps - £230.00
 Flashing beacon - £145.00
 Alterations to std. body sizes - £225 pft

Heavy duty lashing points - £250.00
 Durbar floor 4.5mm - £13 pft
 Timber floor keruing - £32 pft
 Integrated front loading ramps - £275.00
 4 retractable load locks - £510.00
 Loading platform for hydraulic lowering trailer - £835.00

Side marker lights (compulsory for trailers over 9m in length) - £275.00
 Custom colour - £650.00
 Forced steering rear axle incl steering control - £3980.00
 Full selection of wheels & tyres - pg 34

DIMENSIONS

	HIT 10 (HL)	HIT 7 (HL)	HIT 5 (HL)
Gross Capacity	10 T	7 T	5 T
Bed Length	5000mm (16ft 4in)	5000mm (16ft 4in)	4500mm (14ft 9in)
Platform Length (step only)	1620mm (5ft 3in)	1620mm (5ft 3in)	1200mm (3ft 11in)
Width	2450mm (8ft)	2450mm (8ft)	2450mm (8ft)
Body Depth	To Suit	To Suit	To Suit
Main Platform Height	400mm (1ft 3in)	400mm (1ft 3in)	400mm (1ft 3in)
Floor	5mm steel	5mm steel	5mm steel
Axle Size	90mm square	80mm square	70mm square
Axle Type (standard fit)	400 x 80 ag sp	350 x 90 ag sp	350 x 90 ag sp
Chassis Size	Box & channel	Box & channel	Box & channel
Overall Length	7720mm (25ft 3in)	7720mm (25ft 3in)	6720mm (22ft)
Wheels and tyres	385 / 65 R 22.5	385 / 65 R 22.5	385 / 65 R 22.5

COST

£10,525.00 £9,170.00 £7,290.00



KEY DETAILS

Chassis rails are connected by folded ribs to keep the chassis light weight

The lowest load deck of all the trailers

Option of hydraulically lowering trailers which can be loaded from the front or side

Ideal for transporting 3 point linkage implements and low ground clearance vehicles



AGRI DUMP

High tipping



All of our trailers are shotblasted prior to painting, followed by 2 pack epoxy primer & 2 pack polyurethane top coat.

STANDARD SPEC

- Sprung compensating axles
- Hydraulic brakes
- L.E.D lights
- Side reflectors
- Outer access steps
- Heavy duty 50B weld on eyes
- Body prop
- Hydraulic pipe work
- Chassis shock absorption pads
- Hand brake
- Anti jack rams (HMDT 16 & 18)
- Wheel nut indicators
- Super single wheels 385/65R 22.5

OPTIONAL EXTRAS

- High speed axles (HMDT 10 / 12/ 14) - £700.00
- Air/oil twin line braking - £1235.00
- ABS with air brakes - £2540.00
- Hydraulic load sensing valve - £685.00
- Mudguards and mud flaps - £765.00
- Flashing beacon - £145.00
- Adjustable sprung drawbar - £1440.00
- Perspex window - £195.00
- Thicker floor and sides - £POA
- Alterations to std. body sizes - £POA
- Rear drawbar and services - £745.00
- Side marker lights - £275.00
- Anti jack rams - £665.00
- Rope hooks for trailer tilts - £130.00
- Custom colour - £650.00
- Passive steering axle - £2320.00
- Forced steering axle - £3980.00
- Central tyre inflation system - pg 35
- Full selection of wheels & tyres - pg 34

DIMENSIONS



KEY DETAILS

- Strong chassis built from steel rectangular section
- 1 piece floor where possible
- Raised rear chassis for high load tip
- Fully welded sides and floor
- Raised lights to keep protected
- Folded side panels for strength
- Rubber pads used between chassis and body
- Wide chassis for stability



	HMDT 18	HMDT 16	HMDT 14	HMDT 12	HMDT 10
Gross Capacity	18 T (21.5 cubic m)	16 T (19.5 cubic m)	14 T (17.5 cubic m)	12 T (15 cubic m)	10 T 12 T (13 cubic m)
Body Length	6096mm (20ft)	6096mm (20ft)	6096mm (20ft)	5791mm (19ft)	5510 mm (18ft)
Width	2550mm (8ft 4in)	2550mm (8ft 4in)	2550mm (8ft 4in)	2550mm (8ft 4in)	2550 mm (8ft 4in)
Body Depth	1860mm (6ft 1in)	1660mm (5ft 5in)	1440mm (4ft 8in)	1330mm (4ft 4in)	1330mm (4ft 4in)
Platform Height	1330mm (4ft 4in)	1330mm (4ft 4in)	1100mm (3ft 7in)	1100mm (3ft 7in)	1100mm (3ft 7in)
Tipped Body Height	8645mm	8545mm (28ft)	8545mm (28ft)	8000mm (26ft 2in)	7000mm (22ft 11in)
Axle size	2 x 127mm round	2 x 127mm round	2 x 90mm square	2 x 90mm square	2 x 80mm square
Axle type (standard fit)	420 x 180 high sp	420 x 180 high sp	400 x 80 ag sp	350 x 90 ag sp	350 x 90 ag sp
Side / floor thickness	3 / 4mm	3 / 4mm	3 / 4mm	3 / 4mm	3 / 4mm
Chassis size	250 x 150 box	250 x 150 box	250 x 150 box	250 x 150 box	250 x 150 box
Overall length	8220mm (26ft 11in)	8220mm (26ft 11in)	8220mm (26ft 11in)	8010mm (26ft 3in)	7010mm (22ft 11in)
Wheels and tyres	385 / 65 R 22.5	385 / 65 R 22.5	385 / 65 R 22.5	385 / 65 R 22.5	365 / 65 R 22.5

COST

01277 899 604 info@hmtrailers.co.uk

£21,411.00 £19,934.00 £17,546.00 £16,499.00 £15,408.00

All prices are current and are ex VAT. Quoted measurements may change without notification

COMMERCIAL DUMP

Compact, strong & manoeuvrable tipping



All of our trailers are shotblasted prior to painting, followed by 2 pack epoxy primer & 2 pack polyurethane top coat.

STANDARD SPEC

- Sprung compensating axles
- Hydraulic brakes
- Hydraulic tailgate
- L.E.D lights
- Side reflectors
- Heavy duty 50B weld on eyes
- Hand brake
- Wheel nut indicators
- Super single wheels 385/65R 22.5

OPTIONAL EXTRAS

- High speed axles (HMDC 14 only) - £700.00
- Air/oil twin line braking - £1235.00
- ABS with air brakes - £2540.00
- Hydraulic load sensing valve - £685.00
- Mudguards and mud flaps - £765.00
- Flashing beacon - £145.00
- Adjustable sprung drawbar - £1440.00
- Thicker floor and sides - £POA
- Alterations to standard body sizes - £POA
- Rear drawbar and services - £745.00
- Side marker lights - £275.00
- Anti jack rams - £800.00
- Hardox - £POA
- Rope hooks for trailer tilts - £130.00
- Custom colour - £650.00
- Passive steering axle - £2320.00
- Forced steering axle - £3980.00
- Central tyre inflation system - pg 35
- Full selection of wheels & tyres - pg 34

DIMENSIONS



KEY DETAILS

- Strong chassis built from steel rectangular section
- Fully welded sides and floor
- Folded side panels for strength
- Rubber pads used between chassis and body
- Wide chassis for stability
- Half pipe design for light weight trailer
- Hydraulic tailgate with extra top pivot to avoid bridging



	HMDC 25	HMDC 20	HMDC 16	HMDC 14
Gross Capacity	15 cubic m (25T)	12 cubic m (20T)	9.6 cubic m (16T)	8.4 cubic m (14T)
Body Length	6500mm (21ft 3in)	5200mm (17ft)	4700mm (15ft 5in)	4400mm (14ft 5in)
Width	2550mm (8ft 4in)	2550mm (8ft 4in)	2550mm (8ft 4in)	2550mm (8ft 4in)
Body Depth	1227mm (4ft)	1227mm (4ft)	1227mm (4ft)	1027mm (3ft 4in)
Platform Height	1046mm (3ft 5in)	1046 (3ft 5in)	1046 (3ft 5in)	1118mm (3ft 6in)
Tipped Body Height	7196mm (23ft 7in)	6210mm (20ft 4in)	5920mm (19ft 5in)	5440mm (17ft 10in)
Axle size	3 x 127mm round	2 x 127mm round	2 x 127mm round	2 x 90mm square
Axle type (standard fit)	420 x 180 high sp	420 x 180 high sp	420 x 180 high sp	400 x 80 ag sp
Side thickness	8mm	6mm	6mm	6mm
Chassis size	250 x 150 box	250 x 150 box	250 x 150 box	250 x 150 box
Overall length	8586mm (26ft 11in)	7284mm (26ft 11in)	6516mm (21ft 5in)	6484mm (21ft 3in)
Wheels and tyres	385 / 65 R 22.5	385 / 65 R 22.5	385 / 65 R 22.5	385 / 65 R 22.5

COST

£25,810.00 £20,180.00 £18,980.00 £16,670.00

01277 899 604 info@hmtrailers.co.uk

HOOKLIFT

Unbeatable versatility from a trailer



STANDARD SPEC

All of our trailers are shotblasted prior to painting, followed by 2 pack epoxy primer & 2 pack polyurethane top coat.

Sprung compensating axles

Hydraulic brakes

L.E.D lights

Side reflectors

Heavy duty 50B weld on eye

Wheel nut indicators

Hand brake

Assist ram standard for HL16

Anti jack rams for HL16

Super single wheels 385/65R 22.5

OPTIONAL EXTRAS

Air/oil twin line braking - £1235.00
 ABS with air brakes - £2540.00
 Hydraulic load sensing valve - £685.00
 Mudguards and mud flaps - £610.00
 Flashing beacon - £145.00
 Twin flashing beacons - £290.00
 Adjustable sprung drawbar - £1440.00
 Side marker lights - £275.00
 Anti jack rams - £665.00

1m long lockable tool boxes (plastic) - £295.00 each
 Reversing lights - £220.00
 Rear switch over spool with quick release couplings - £390.00
 Underrun side guards - £251
 Weigh cells - £6550.00
 Tri axle - EPOA
 Air suspension - EPOA

Axle lift - EPOA
 Heavy duty steering - EPOA
 Custom colour - £650.00
 Passive steering axle - £3079.00
 Forced steering axle - £3980.00
 New lifting gear - £19,035.00
 Central tyre inflation system - pg 35
 Full selection of wheels & tyres - pg 34

DIMENSIONS

HL 16

HL 14

Gross Capacity (payload)	16 T	14 T
Width	2550mm (8ft 4in)	2550mm (8ft 4in)
Body Depth	To suit	To suit
Main Platform Height	1200mm (3ft 11in)	1200mm (3ft 11in)
Unladen weight	5400kg	5350kg
Axle size	2 x 127mm round	2 x 127mm round
Axle type (standard fit)	420 x 180 high sp	420 x 180 high sp
Chassis size	250 x 150 box	250 x 150 box
Wheels and tyres	385 / 65 R 22.5	385 / 65 R 22.5
Lifting Gear	Refurb/ used	Refurb/ used



KEY DETAILS

All new running gear

Cost effective using refurbished hook gear

Option to include new hook gear

Strong chassis built from steel rectangular section

Anti jack rams fitted to rear axle to stop the drawbar lifting (some models)

Stiff suspension to form stable platform

Versatility unbeaten elsewhere



COST

£19,530.00

£17,835.00

01277 899 604 info@hmtrailers.co.uk

All prices are current and are ex VAT. Quoted measurements may change without notification

TRI-AXLE HOOKLIFT

Unbeatable versatility from a trailer



All of our trailers are shotblasted prior to painting, followed by 2 pack epoxy primer & 2 pack polyurethane top coat.

STANDARD SPEC

- Air suspension
- Hydraulic brakes
- L.E.D lights
- Side reflectors

- Heavy duty 50B weld on eye
- Wheel nut indicators
- Hand brake
- Assist ram standard for HL20

- Air dump standard for HL20
- Wheel chocks
- Super single wheels 385/65R 22.5

OPTIONAL EXTRAS

- Air/oil twin line braking - £1235.00
- ABS with air brakes - £2540.00
- Hydraulic load sensing valve - £685.00
- Mudguards and mud flaps - £610.00
- Flashing beacon - £145.00
- Twin flashing beacons - £290.00
- Adjustable sprung drawbar - £1440.00
- Side marker lights - £275.00

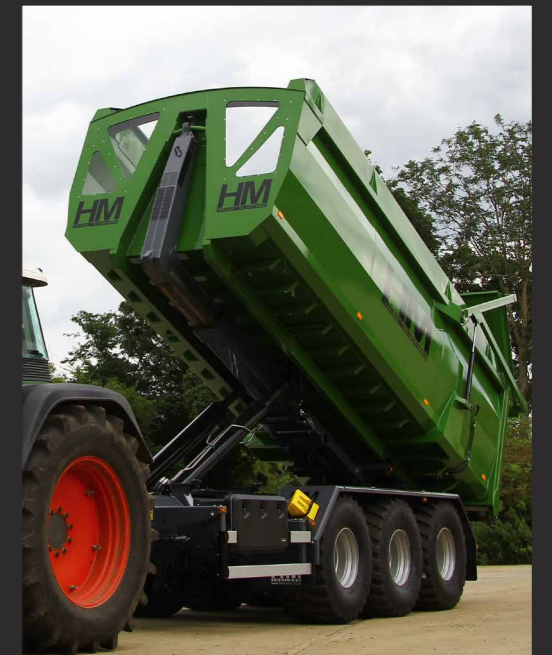
- 1m long lockable tool boxes (plastic) - £295.00 each
- Reversing lights - £220.00
- Rear switch over spool with quick release couplings - £390.00
- Underrun side guards - £251.00
- Weigh cells - £6550.00
- Front axle lift - £900.00

- Rear axle lift - £900.00
- Heavy duty steering - EPOA
- Custom colour - £650.00
- Passive steering axle - £3079.00
- Forced steering axle - £3980.00
- New lifting gear - POA
- Central tyre inflation system - pg 35
- Full selection of wheels & tyres - pg 34

DIMENSIONS

HL 20

Gross Capacity (payload)	20 T
Width	2550mm (8ft 4in)
Body Depth	To suit
Main Platform Height	1200mm (3ft 11in)
Unladen weight	5400kg
Axle size	3 x 127mm round
Axle type (standard fit)	420 x 180 high sp
Chassis size	250 x 150 box
Wheels and tyres	385 / 65 R 22.5
Lifting Gear	Refurb/ used



KEY DETAILS

- All new running gear
- Cost effective using refurbished hook gear
- Option to include new hook gear
- Strong chassis built from steel rectangular section
- Air suspension as standard
- Versatility unbeaten elsewhere



COST

£25,499.00

01277 899 604 info@hmtrailers.co.uk

All prices are current and are ex VAT. Quoted measurements may change without notification

HOOKLIFT BINS

Demount units for every purpose



All of our trailers are shotblasted prior to painting, followed by 2 pack epoxy primer & 2 pack polyurethane top coat.

STANDARD SPEC

GRAIN BODY	YARD BIN	SILAGE BODY	ROCK BODY/ HALF PIPE	FLAT DECK
Hydraulic tailgate	Manual door	Hydraulic tailgate	Hydraulic tailgate	Durbar/ timber floor
Perspex window	Perspex window	Front grill		Rear ramps
Access steps	Access steps	Tapered body		

OPTIONAL EXTRAS - PER BODY STYLE

Silage sides - £2,495.00	Rollover sheet - £1,600.00	Perspex windows - £195.00	Rear barn doors (RB) - FOC	Timber posts - £65.00 each
Rollover sheet - £1,600.00	High level lights - £385.00		High level lights (RB) - £385.00	Heavy duty lashing points - £268.00
High level lights - £385.00			Grain hatch	Twist locks - £508.00
Grain sock - £195.00			Grain hatch (RB & HP) - £128.00	
Baffles - £510.00				

DIMENSIONS

	HM 18T GRAIN BODY	HM 16T GRAIN BODY	HM 14T GRAIN BODY	HM 40 CUBIC YD YARD BIN	HM 45 CUBIC YD SILAGE BODY	HM 19 CUBIC YD ROCK BODY	HM 15 CUBIC YD HALF PIPE	HM FLAT DECK DURBAR	HM FLAT DECK TIMBER
Volume Cubic M	23.3	20.2	18	30	35	15	11.4	N/A	N/A
Body Cost	£10,945.00	£9,600.00	£8,820.00	£8,390.00	£13,266.00	£6,956.00	£8,602.00	£4,595.00	£5,270.00



KEY DETAILS

HM Trailers offer standard bin units and also build a variety of special build projects.

If you have an idea we are always prepared to listen to it.

Skeletal skid units also available from £2,660.00.



DOLLY

Strong task masters



STANDARD SPEC

High speed axles

L.E.D lights

100mm sprung suspension

All of our trailers are shotblasted prior to painting, followed by 2 pack epoxy primer & 2 pack polyurethane top coat.

Super single wheels 385/65R 22.5

Heavy duty 50B weld on eyes

Wheel nut indicators

Hydraulic pipe work storage

OPTIONAL EXTRAS

Air/oil twin line braking - £1235.00
 ABS with air brakes - £2540.00
 Hydraulic load sensing valve - £685.00

Mudguards and mud flaps - £310.00
 Flashing beacon - £145.00
 Heavy duty cast fifth wheel - £1275.00

Full selection of wheels & tyres - pg 34

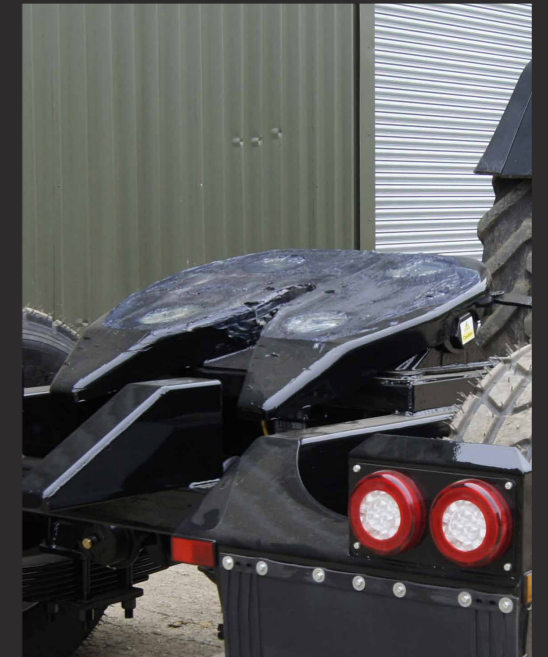
DIMENSIONS

	HM DLY 20	HM DLY 10
Capacity	20T	10T
Axle size	2 x 127mm round	1 x 127mm round
Axle type	420 x 180 high speed	420 x 180 high speed
Chassis size	200 x 100 box	200 x 100 box



KEY DETAILS

- New Jost fifth wheel plate
- High speed commercial axles
- Single or twin axled trailer



COST

£9,825.00 £5,970.00

01277 899 604 info@hmtrailers.co.uk

All prices are current and are ex VAT. Quoted measurements may change without notification

BOWSER

Convenient liquid transportation



STANDARD SPEC

All of our trailers are shotblasted prior to painting, followed by 2 pack epoxy primer & 2 pack polyurethane top coat.

Sprung Compensating axles

Hydraulic brakes

L.E.D lights

Side reflectors

Heavy duty 50B weld on eyes

Hand brake

Chassis shock absorption pads

Wheel nut indicators

Super single wheels 385/65R 22.5

OPTIONAL EXTRAS

High speed axles (per axle) HM10C - £350.00
 Air/oil twin line braking - £1235.00
 ABS with air brakes - £2540.00
 Hydraulic load sensing valve - £685.00
 Mudguards and mud flaps - £610.00
 Flashing beacon - £145.00
 Adjustable sprung drawbar - £1440.00
 Chemical storage boxes - £1375.00
 Battery controlled fill shut off valve - £600.00
 Sight guage mounted to main tank - £310.00

Saddle mount for 200L barrels or 1000L IBC mount - £315.00
 Homburg Handler 4 including 3" pump - £10,425.00
 Homburg Handler 1, 2, 3 - £POA
 3" manifold change over system - £1255.00
 Diesel storage integrated tank - £POA
 2" petrol pump & fittings - £865.00
 2" hydraulic pump & fittings - £1015.00
 3" petrol pump & fittings - £1030.00
 3" hydraulic pump & fittings - £1150.00

External pipe storage - £345.00
 Extra pipe work 2" - £145.00
 Extra pipe work 3" - £185.00
 Side marker lights - £275.00
 Custom tank colour - £650.00
 Custom chassis colour - £390.00
 Passive steering axle - £2320.00
 Forced steering axle - £3980.00
 Central tyre inflation system - pg 35
 Full selection of wheels & tyres - pg 34
 Induction hopper - £POA

DIMENSIONS

	HM 19	HM 17	HM 16	HM 15	HM 13	HM 12	HM 10	HM08	HM 06
Chassis incl. composite tank	£32,223.00	£32,134.00	£28,786.00	£27,402.00	£26,650.00	£25,754.00	£23,457.00	£21,635.00	£20,044.00
Chassis incl. plastic tank	N/A	N/A	N/A	N/A	POA	POA	£16,408.00	POA	POA
Chassis incl. stainless steel tank	POA	POA	POA	£33,144.00	£31,163.00	£30,367.00	£28,120.00	POA	POA
Chassis incl. split stainless steel tanks	Prices dependant upon build specs, please contact for more information								



KEY DETAILS

Low and wide chassis platform for stability

Strong chassis built from steel rectangular section

Elliptical tank to lower the center of gravity

Rubber pads used between the chassis and the tank



CHASER BOWSER

New innovation



KEY DETAILS

Sizes to suit:
5,000l / 6,000l / 8,000l / 10,000l

This is aimed at reducing the capital cost involved with a pair of machines.

We believe that this bowser can be employed alongside an existing machine, transforming the machines output.

We expect no more hours on the one machine if serviced in the field, but twice the output of the sprayer for a fraction of the cost involved in the spraying operation. And that tied up in the second machine.



BESPOKE BUILDS

Always innovating to help you get the job done

At HM Trailers, we pride ourselves with the fact that we try to say YES! Often we are presented with a trailer requirement that is very much out of the ordinary. We apply a logical and sensible approach gained over many years of building and using trailers, to achieve the desired end result.

Pictured below are a small selection of the many bespoke projects we regularly undertake for different customers at HM Trailers.

This page shows some of the examples that we have built to date. If it is SAFE, LEGAL and POSSIBLE, we will build it for you. After all, these ideas are applicable to everyone in the industry and it drives a development programme here at HM Trailers, with the best ideas becoming standard build elements.

If you have not seen exactly what you are looking for in these pages, then give us a call and we will see what we can do for you.



WHEEL, TYRE & AXLE OPTIONS

Axle options

All trailer prices in this booklet are based on standard wheels (ST). If you would prefer to use a non-standard assembly from the chart then please recalculate thus:

1. Deduct the cost of the appropriate number of standard wheel & tyre assemblies from the basic price of the trailer.

2. Add the cost of the appropriate number of chosen wheel and tyre assemblies.

High Speed – Trailers quoted as high speed already have high speed axles and are recommended to have mudguards, mud flaps and either twin line and load sensing or hydraulic load sensing braking systems fitted at the time of build (depending on customer requirements), meeting the required 50% braking efficiency.

Ag Speed – Trailers have hydraulic all round braking systems fitted onto agricultural axles. These meet the current minimum 25% braking efficiency.

Air Ready – Trailers quoted as 'air ready' already have all the relevant mounting points pre-fitted for load-sensing valves, air brake chamber mounts on the axles, air tank mounts and load sensing bar mounts on the axles. They also come with suitable high speed, s-cam braked axles for the wheel assemblies mounted at the time of build to provide 50% braking efficiency with sufficient applied pressure.

ST = Wheel/tyre included in standard build price X = Other Wheel/tyre options * = Other makes available - POA	Price per unit from	Grain	Muck	Root Crop	Low Loader/Btail	Implement	Bale/Pallet	Dump Ag/Comm	Hooklift	Bowser	Utility	Cattle	Dolly
10/75 - R 15.3	£195.00		ST								ST		
12.5/80 R 15.3*	£205.00										ST		
480/45 R 17 FLOTATION + VREDESTEIN	£490.00	X		X	X	X					X	X	X
520/50 R 17 TL VREDESTEIN RADIAL	£605.00	X		X	X	X					X	X	X
215/75 R 17.5 Twin wheels NEW CASING	£480.00				ST		X						X
245/70 R 17.5 Twin wheels NEW CASING	£520.00				X		X						X
385/65 R 22.5 Super single REMOULDED	£305.00	ST		ST	X	ST	ST	ST	ST	ST	X	ST	ST
445/65 R 22.5 Super single NEW CASING*	£680.00	X		X		X	X	X	X	X		X	X
435/50 R 19.5 Super single NEW CASING	£540.00				X	X	X	X	X	X	X		X
445/40 R 19.5 Super single REMOULDED	£540.00	X		X		X	X	X	X	X	X	X	X
520/55 R 22.5 TL VREDESTEIN RADIAL	£868.00	X		X		X	X	X	X	X			X
560/45 R 22.5 TL VREDESTEIN*	£937.00	X		X		X	X	X	X	X			X
560/60 R 22.5 TL VREDESTEIN/BKT/ALLIANCE* RADIAL	£1024.00	X		X			X	X	X	X			X
580/65 R 22.5 VREDESTEIN* RADIAL	£1156.00	X		X				X	X				
600/50 R 22.5 VREDESTEIN* RADIAL	£1085.00	X		X				X	X				
650/50 R 22.5 TL VREDESTEIN* RADIAL	£1207.00	X		X				X	X	X			
710/45 R22.5 TL VREDESTEIN* RADIAL	£1579.00	X		X				X	X	X			
650/55 R26.5 VREDESTEIN* RADIAL	£1690.00	X		X				X	X				
710/50 R26.5 VREDESTEIN* RADIAL	£1780.00	X		X				X	X	X			

WHEEL DRIVE ASSIST

Single pump is a more cost effective way of accessing wheel drive assist, however this does not give you the benefit of differential drive.

Double pump systems act as a diff lock, ensuring equal drive to both wheel motors as an axle. This also protects each circuit from damage if there were a failure. This system could be mounted to various trailers if necessary, or just to make a powered dolly for bulk trailer use.

PUMP TYPE	AXLE DRIVE TYPE	£
Single Pump	Single Axle Drive (2 wheel motors)	POA
Double Pump	Single Axle Drive (2 wheel motors)	POA
Double Pump	Double Axle Drive (4 wheel motors)	POA



CENTRAL TYRE INFLATION

Keeping the wheels turning without the ground churning



HM CTI systems

In theory, every trailer could have one. At HM Trailers we sell many trailers with expensive wheel and tyre assemblies to reduce ground compaction. All this good work is then undone, as the tyre pressures required are compromised by forward speeds and the pressure required to run at road speeds. The solution is to vary the tyre pressures according to the speed you are traveling. Making this happen is a different matter altogether.

At HM Trailers, we have managed to crack that nut!! We have even managed to ensure that tyre inflation is now just a simple matter of pushing a button.

This is now also even possible on the move a frustration with many earlier tyre inflation systems previously on the market.

We feel this is such an exciting prospect, to either make more standard 560/60 assemblies for example much more field friendly or dropping pressures on bigger assemblies towards fantastically low tyre pressures. Further benefits include lower rolling resistance, better fuel consumption, in the field and on the road and less tyre wear.

INTERNAL AXLE WORKINGS

Single line (Analogue) – pipe work runs through the axle via specialist reworkings. This protects everything from becoming damaged. Cheaper than the twin line system, but it requires the use of ball valves at the rim to be closed to reduce the risks of deflation when not in use. The pipe work is constantly pressurised. Now for 2023 is the inclusion of auto reinflation of the single line systems.

Twin line (Digital) - pipe work runs through the axle via specialist reworkings. This protects everything from becoming damaged. The twin line then operates a sealing valve at the rim at the time of a pressure change, reducing the chances of the tyre deflating over a period when the trailer is stood up, or if there was any damage to the pipe work, as there is no pressure in the lines when it is not requires.

CAB CONTROL METHODS

Analogue – the control box mounted on the trailer is manually set to field and road pressures. There is then a simple switch box in the cab that is used to change between pressures. Available with single and twin line systems.

Digital – the control box is mounted in the cab, or via an isobus connection. You can then either pre set high/low pressures for easy adjustment, or you can adjust the pressure in 0.1 bar increments. This is only available with twin line systems.

Tanks are dependent on tyre assembly sizes. Tyre pressure calculations are required prior to use. This is calculated using tyre inflation charts supplied by the tyre manufacturers. An example would be as follows: 52psi road pressure deflated to 18psi for field use.

AXLE NO.	SINGLE LINE	TWIN LINE
2 axle	£5136.00	£8060.00
3 axle	£6292.00	£9740.00
ISOBUS	n/a	£963.00



TRAILER HIRE

Boost your fleet when you need it the most



INFORMATION

Our flexible hiring system means that you can hire our trailers at any time of the year, and for any amount of time to suit you.

We have short term hire rates charged daily, and longer term rates charged weekly to suit the needs of individuals and contractors alike.

We cover the cost of collection, and will arrange delivery if necessary, just let us know what you need. Refer to our website for full terms and conditions or to download a hire form www.hmtrailers.co.uk



TRAILER	REF	QTY	ABS - £35 (1wk)	ROLL OVER SHEET - £40 (1wk)	SILAGE SIDES - £55 (1wk)	NON HARVEST Daily rate Deposit charge (1 day)	HARVEST HIRE Daily rate Deposit charge (1 day)	NON HARVEST Weekly rate Deposit charge (1 wk)	HARVEST HIRE Weekly rate (min hire 6 weeks) Deposit charge (1 wk)
GRAIN HM1820 air/oil	A	<input type="checkbox"/>	<input type="checkbox"/>	<input type="checkbox"/>	<input type="checkbox"/>	£100.00 <input type="checkbox"/>	£120.00 <input type="checkbox"/>	£370.00 <input type="checkbox"/>	£430.00 <input type="checkbox"/>
GRAIN HM1820 oil	B	<input type="checkbox"/>	<input type="checkbox"/>	<input type="checkbox"/>	<input type="checkbox"/>	£95.00 <input type="checkbox"/>	£115.00 <input type="checkbox"/>	£360.00 <input type="checkbox"/>	£420.00 <input type="checkbox"/>
GRAIN HM1517 air/oil	C	<input type="checkbox"/>	<input type="checkbox"/>	<input type="checkbox"/>	<input type="checkbox"/>	£95.00 <input type="checkbox"/>	£115.00 <input type="checkbox"/>	£355.00 <input type="checkbox"/>	£415.00 <input type="checkbox"/>
GRAIN HM1517 oil	D	<input type="checkbox"/>	<input type="checkbox"/>	<input type="checkbox"/>	<input type="checkbox"/>	£90.00 <input type="checkbox"/>	£110.00 <input type="checkbox"/>	£345.00 <input type="checkbox"/>	£405.00 <input type="checkbox"/>
GRAIN HM1415 air/oil	E	<input type="checkbox"/>	<input type="checkbox"/>	<input type="checkbox"/>	<input type="checkbox"/>	£90.00 <input type="checkbox"/>	£110.00 <input type="checkbox"/>	£340.00 <input type="checkbox"/>	£400.00 <input type="checkbox"/>
GRAIN HM1415 oil	F	<input type="checkbox"/>	<input type="checkbox"/>	<input type="checkbox"/>	<input type="checkbox"/>	£85.00 <input type="checkbox"/>	£105.00 <input type="checkbox"/>	£330.00 <input type="checkbox"/>	£390.00 <input type="checkbox"/>
BALE HARVEST HBT 18T 32ft	G	<input type="checkbox"/>	<input type="checkbox"/>	<input type="checkbox"/>	<input type="checkbox"/>	£85.00 <input type="checkbox"/>	£105.00 <input type="checkbox"/>	£320.00 <input type="checkbox"/>	£370.00 <input type="checkbox"/>
BALE HARVEST HBT 14T 28ft	H	<input type="checkbox"/>	<input type="checkbox"/>	<input type="checkbox"/>	<input type="checkbox"/>	£80.00 <input type="checkbox"/>	£100.00 <input type="checkbox"/>	£295.00 <input type="checkbox"/>	£350.00 <input type="checkbox"/>
HOOKLIFT HL16	I	<input type="checkbox"/>	<input type="checkbox"/>	<input type="checkbox"/>	<input type="checkbox"/>	£110.00 <input type="checkbox"/>	£120.00 <input type="checkbox"/>	£450.00 <input type="checkbox"/>	£465.00 <input type="checkbox"/>
GRAIN BIN HL16T	J	<input type="checkbox"/>	<input type="checkbox"/>	<input type="checkbox"/>	<input type="checkbox"/>	£105.00 <input type="checkbox"/>	£115.00 <input type="checkbox"/>	£115.00 <input type="checkbox"/>	£115.00 <input type="checkbox"/>

01277 899 604 info@hmtrailers.co.uk

Please tick appropriate. All Prices are current and are ex VAT.

DEALERSHIPS

All our trailers are built here in England, we sell direct & through dealerships across the UK



LINCOLNSHIRE
www.louthtractors.co.uk



ESSEX, KENT, W SUSSEX &
HAMPSHIRE
www.rwcrawford.co.uk



SHROPSHIRE
www.severnfarmmachinery.co.uk



N & E DORSET, S SOMERSET &
SW WILTSHIRE
www.gcsagri.co.uk



SW GLOUCESTERSHIRE,
OXFORDSHIRE & WILTSHIRE
www.beckettagricultural.co.uk



ESSEX,
www.rcboreham.co.uk



NORTHUMBERLAND (NE)
jack.schofield.service@gmail.com



STAFFORDSHIRE
www.komachines.co.uk



CAMBRIDGESHIRE, SUFFOLK,
NORFOLK
www.tnsgroup.co.uk



NORTHAMPTONSHIRE, RUTLAND,
LEICESTERSHIRE, OXFORDSHIRE,
WARWICKSHIRE
www.venturefarmmachinery.co.uk



CHESHIRE
www.grichardsonagri.co.uk



CHESHIRE
www.dewhurstagri.com

NOTES:

Blank area for notes with horizontal dashed lines.