

# HORSE MUCK

Robust tipping trailer, with front access ramp



All of our trailers are shotblasted prior to painting, followed by 2 pack epoxy primer & 2 pack polyurethane top coat.

## STANDARD SPEC

Front access ramp in chequerplate

L.E.D lights

Hand brake

Single piece rear door

## OPTIONAL EXTRAS

High speed axles - £350.00  
 Mudguards and mud flaps - £425.00  
 Variation in body size - £POA  
 Side marker lights - £275.00

Ropehooks - £130.00  
 Clear roll over sheet - £1360.00  
 Double rear door - £285.00  
 Heavy duty ramp - £350.00

Custom colour - £650.00  
 Full selection of wheels & tyres - pg 34

## DIMENSIONS



### KEY DETAILS

Strong chassis built from steel rectangular section

Folded side sheets for added strength

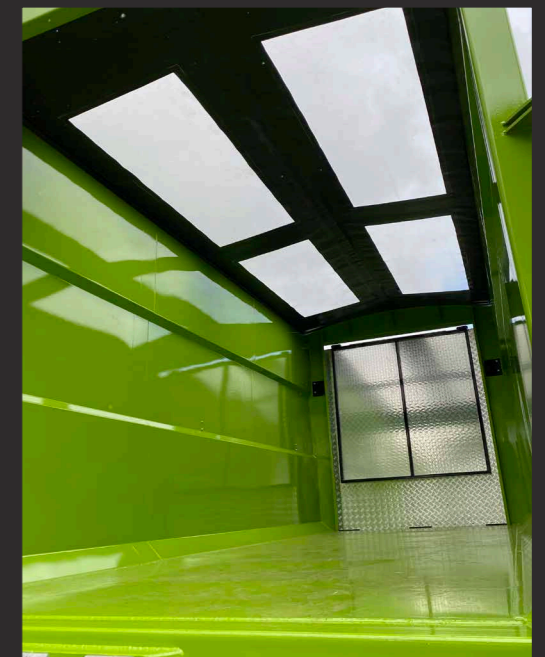
Front access ramp made with aluminium durbar for non-slip

Single or double rear door



### HMU 8      HMU 6      HMU 4

	HMU 8	HMU 6	HMU 4
Capacity	8 T	6 T	4 T
Body Length	4880mm (16ft)	3600mm (11ft 10in)	2700mm (8ft 10in)
Width	2100mm (6ft 10in)	2100mm (6ft 10in)	2100mm (6ft 10in)
Body Depth	2100mm (6ft 10in)	2100mm (6ft 10in)	2100mm (6ft 10in)
Access Angle	17 degrees	17 degrees	17 degrees
Axle Size	80mm square	70mm square	70mm square
Overall Length	6300mm (20ft 8in)	5020mm (16ft 6in)	4120mm (13ft 6in)
Tyres	12.5/80 15.3	10/75 R15.3	10/75 R15.3



## COST

£11,150.00    £9,790.00    £9,180.00

01277 899 604    info@hmtrailers.co.uk

All prices are current and are ex VAT. Quoted measurements may change without notification